

Public Document Pack



Meeting of: Heywood, Middleton and Rochdale Locality Board
Date: Tuesday, 29th August, 2023
Time: 2.00 pm.
Venue: Hollingworth (Room 108ABC), First Floor, Number One Riverside, Smith Street, Rochdale, OL16 1XU

Item No.	AGENDA	Page No
11	Tabled Presentation - Neighbourhoods Programme Board Assurance Report	2 - 6

Neighbourhood Programme Impact

August 2023

Heywood, Middleton & Rochdale

Integrated Care Partnership



Neighbourhoods - Integrated Care



Co-location of Rochdale North and Rochdale South Health and Social Care at Spotland Bridge Mill in May 2023 leading to full integration of teams.

Page 3



Integration of teams has enhanced the offer to residents by:

- Streamlining referrals and having one single referrals process
- Assigned link workers for GP surgeries
- Closer working with care homes and home care providers for Adult Social Care
- Shared knowledge, risk assessments and Joint decision making on urgent cases



Working as an integrated team, enables all team function to be place based and improve the response to the residents of Rochdale North and Rochdale South.





Neighbourhoods - Heywood

Heywood Leadership group held a Healthy Heywood day at local Morrisons supermarket

IMPACT



150 of residents had their blood pressure and blood sugars taken by Health Care Assistants/ Pharmacy Staff



200 residents were educated on the role of social prescribers and their links to other services.



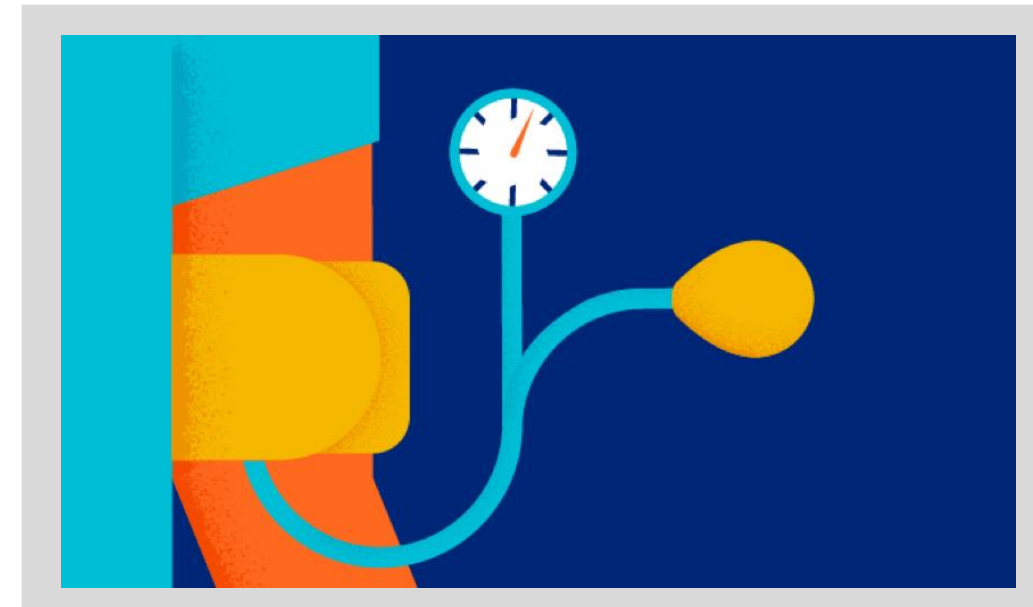
Practice Managers raised **awareness of cancer screening and services** within the borough and Living Well promoted their range of services.



All **data** collected was passed on to residents registered GP Practice



Due to the **success** the Primary Care Network are interested in planning another Healthy Heywood day on **15th September** at Heywood Market



Neighbourhoods - Middleton



**Heywood,
Middleton
& Rochdale**

Integrated Care Partnership



Social Prescribing Link Workers (SPLW) are now linked into multiple services and organisations to support Middleton Residents.

Jennifer's Story

Background

Jennifer's partner had issues with drugs, alcohol and was physically abusive towards Jennifer and her daughter. Jennifer left the relationship and the police were involved. The perpetrator was released on bail to another address.

Concerns

Jennifer struggled with her mental health not eating or sleeping. She lost all motivation. Her house was without carpets, curtains and a working cooker in her home and she was struggling financially

She was also concerned with security as her ex partner still had a key to the property and people would come round banging on the door making threats.

Intervention

- Mind and the Mental Health Practitioner to support with mental health.
- Re-Use Littleborough to support with items for her house.
- Rochdale Connections Trust to support for domestic violence.
- Lighthouse Project to support with benefits and a food parcel.
- Housing service to change the locks within 24 hours.



