



**Pennine Care**  
NHS Foundation Trust

# WELCOME TO PENNINE CARE



# Our vision

A happier and more hopeful life for everyone in our communities.

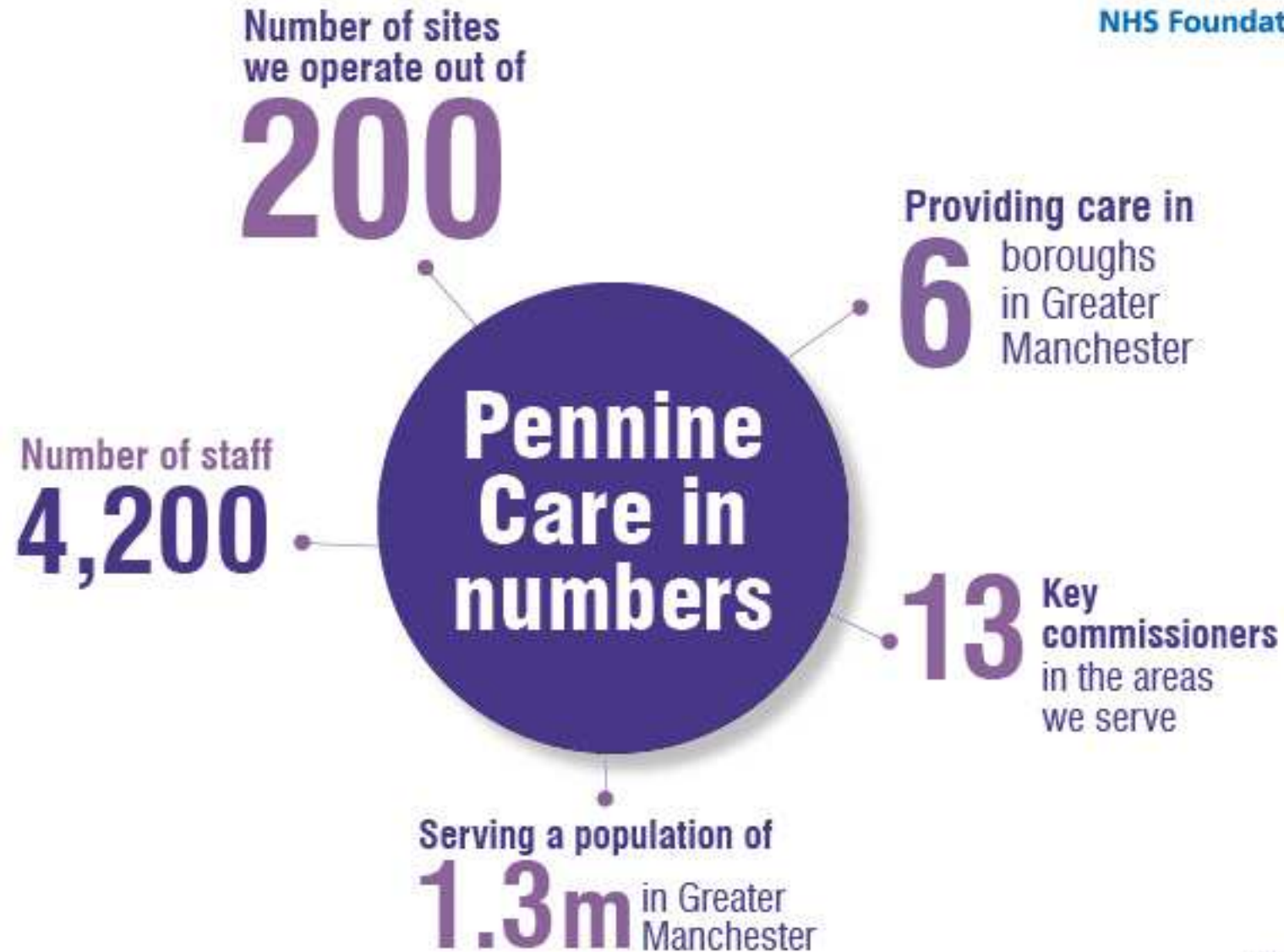
# Our purpose

Maximise people's potential to live more rewarding lives and create a great place to work.



# Our values





# Our services





**Pennine Care**  
NHS Foundation Trust

# **Our services**

## **Mental Health and Learning Disability**

We provide a range of services across Bury, Heywood, Middleton and Rochdale, Oldham, Tameside and Stockport. These include:

**Adult:** Primary care, community and inpatient

**Child and Adolescent:** Community and inpatient

**Older People:** Community and inpatient

**Substance Misuse**

**Learning Disability**

**Rehabilitation and High Support**

# **Our services**

## **Community (physical health)**

Services across Rochdale (children) and Trafford (adults and children).

These include:

- **District nurses**
- **School nurses**
- **Health improvement**
- **Allied health professionals**
- **And many more**
- **Health visitors**
- **Therapists**
- **Dentists**
- **Support staff**

# Executive Directors



**Clare Parker**  
Executive Director of  
Nursing, Healthcare  
Professionals and  
Quality Governance



**Dr Henry Ticehurst**  
Medical Director and  
Joint Deputy Chief  
Executive



**Suzanne Robinson**  
Executive Director of  
Finance and Joint  
Deputy Chief Executive



**Claire Molloy**  
Chief Executive



**Nicky Littler**  
Executive Director of  
Workforce



**Judith Crosby**  
Executive Director  
of Service Development  
and Delivery



**Keith Walker**  
Executive Director  
of Operations



# Non-Executive Directors

