



Pennine Care
NHS Foundation Trust

WELCOME TO PENNINE CARE



Our vision

A happier and more hopeful life for everyone in our communities.

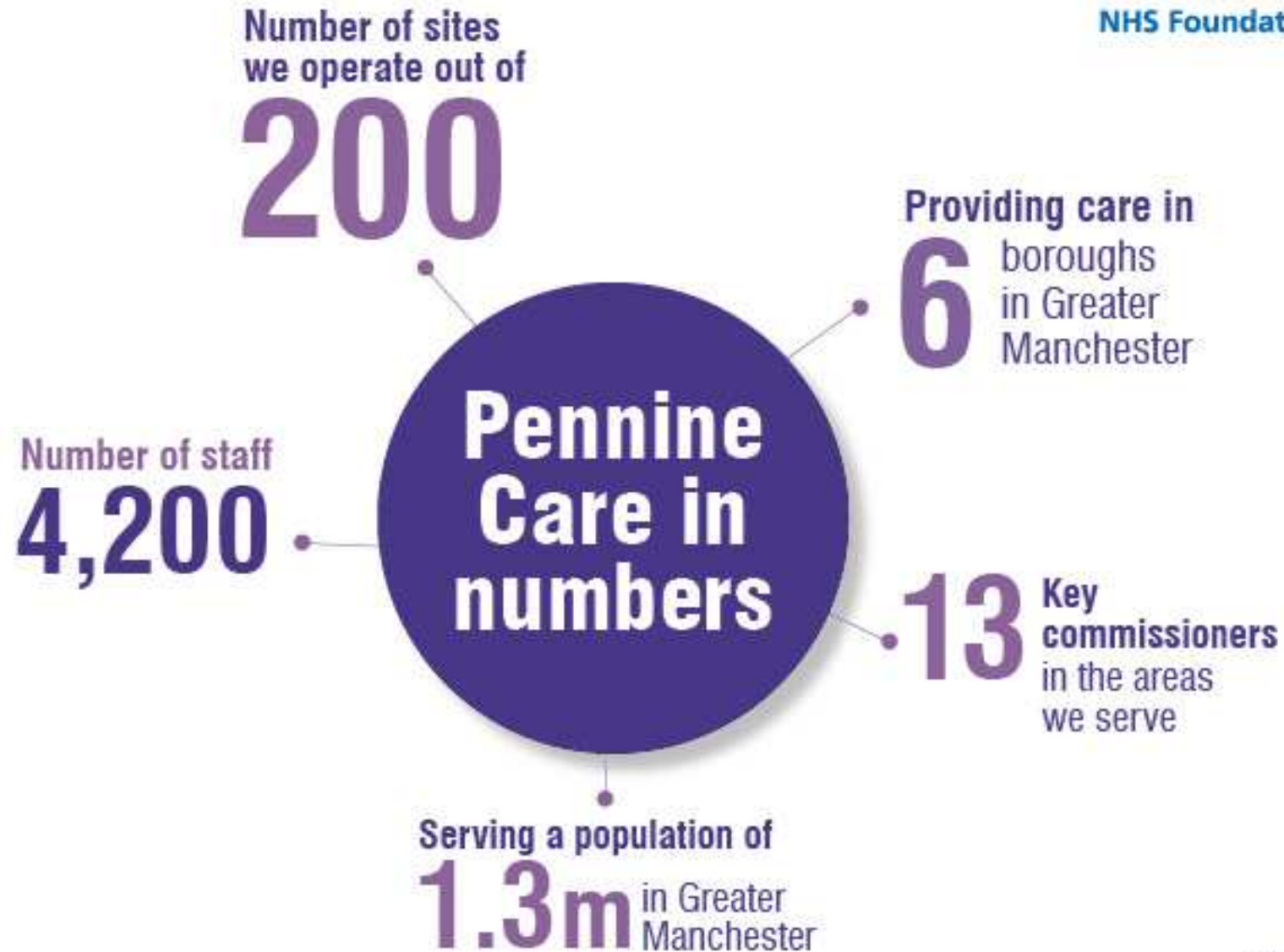
Our purpose

Maximise people's potential to live more rewarding lives and create a great place to work.



Our values





Our services





Pennine Care
NHS Foundation Trust

Our services

Mental Health and Learning Disability

We provide a range of services across Bury, Heywood, Middleton and Rochdale, Oldham, Tameside and Stockport. These include:

Adult: Primary care, community and inpatient

Child and Adolescent: Community and inpatient

Older People: Community and inpatient

Substance Misuse

Learning Disability

Rehabilitation and High Support

Our services

Community (physical health)

Services across Rochdale (children) and Trafford (adults and children).

These include:

- **District nurses**
- **School nurses**
- **Health improvement**
- **Allied health professionals**
- **And many more**
- **Health visitors**
- **Therapists**
- **Dentists**
- **Support staff**

Executive Directors



Clare Parker
Executive Director of
Nursing, Healthcare
Professionals and
Quality Governance



Dr Henry Ticehurst
Medical Director and
Joint Deputy Chief
Executive



Suzanne Robinson
Executive Director of
Finance and Joint
Deputy Chief Executive



Claire Molloy
Chief Executive



Nicky Littler
Executive Director of
Workforce



Judith Crosby
Executive Director
of Service Development
and Delivery



Keith Walker
Executive Director
of Operations

Non-Executive Directors

