



# Overview and Scrutiny Committee Slides

June 2021

**Balfour Beatty**

---

# Content

---

- Summary
- Routine Drainage
- Highways Defect Work
- Scheme Projects
- Social Value

---

# Summary

---

## Headline figures and commitments

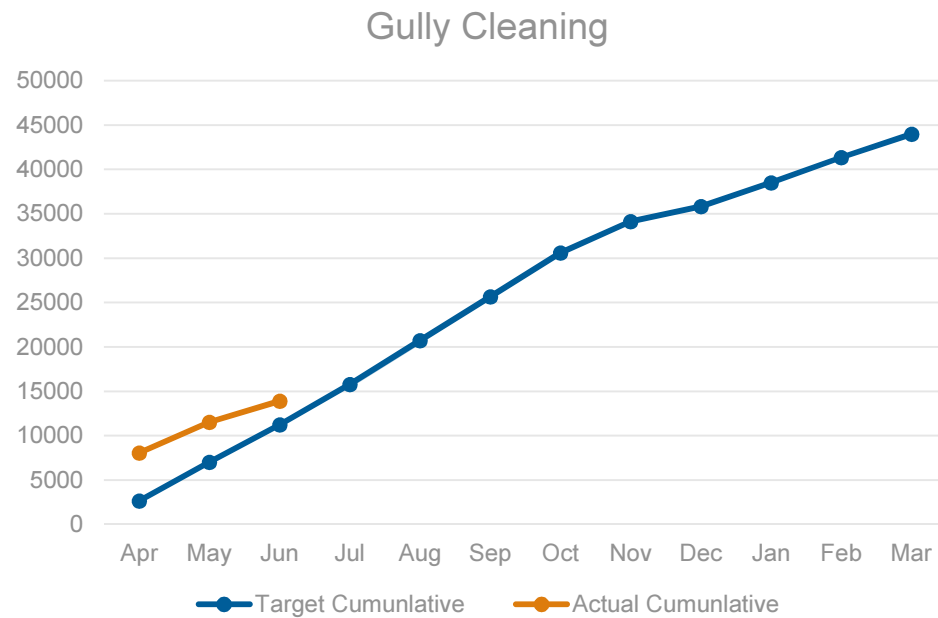
1. 3.8% discount applied to capital spend March 2019 to March 2022.- Current total discount £290,000.00
2. Total social value added to date (April 2021) £11.8m.
3. Productivity and resource levels maintained for routine gulley maintenance.
4. Productivity and resource levels maintained for pothole repairs to manage overdue orders at agreed level.
5. Provision of monthly Management Board report of key stats and monthly KPI report to RBC.

# Routine Gully Maintenance

KPI 6- Routine Gully Maintenance Work Completed to agreed Programme	Agreed Level	95%
	Cumulative Gullies attended	% of gullies attended vs target
April	8066	304%
May	11538	164%
18th June	13885	124%

2021/ 2022 routine drainage started 18/03/21, programmed work targets to date have been exceeded.

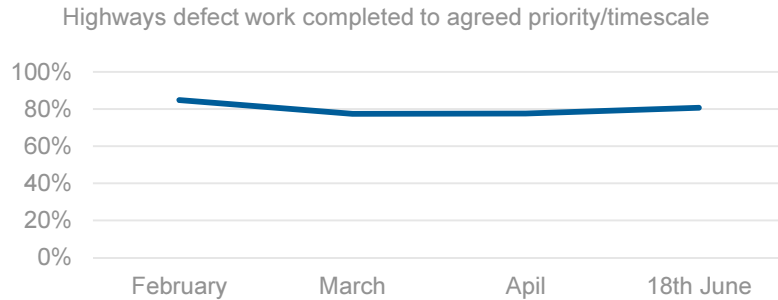
BBLP continue to monitor work outputs and KPI targets.



# Highways defect's

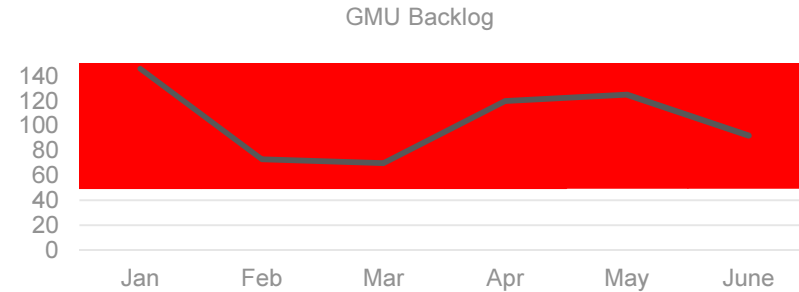
Highways defect work completed to agreed priority/timescale	Agreed Level	95%
	% of 20 day orders completed in timescale	
February	84.85%	
March	77.37%	
April	77.64%	

BBLP are focussed on highway defect's to provide the most efficient service and adhere to the agreed KPI.



GMU Backlog	Agreed Level	50
	Agreed Level at the End of the Month	
March	70	
April	120	
May	125	

BBLP continue to monitor the daily backlog, additional resource has been allotted to reduce the current backlog to the agreed level of 50.



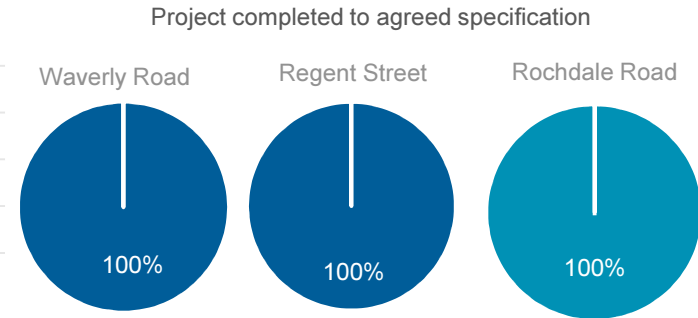
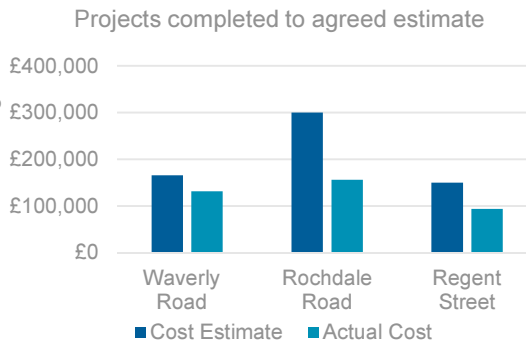
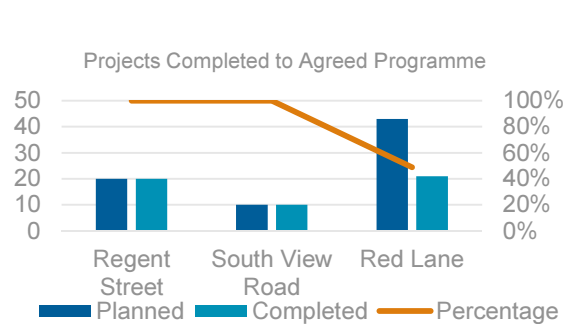
# Scheme Work

KPI completed to agreed programme	Agreed Level	95%	Projects completed to agreed estimate	Agreed Level	90%	Project completed to agreed specification	Agreed Level	100%
	Date Started	% Completed		Actual Cost	% of actual value against estimated cost		% completed to Specifications	
Regent Street	19/04/2021	100%	Waverly Road	£131,487.18	79%	Waverly Road	100%	
South View Road	05/04/2021	100%	Rochdale Road	£156,462.72	52%	Rochdale Road	100%	
Red Lane	19/04/2021	100%	Regent Street	£94,303.81	63%	Regent Street	100%	

BBLP working in accordance with the programme. Red Lane has additional footway works and future works are scheduled to start as per programme.

Recent projects delivered below estimated cost.

All works delivered to specification, including all lining and road marking requirements for the referenced schemes.



# Social Value

Throughout the COVID-19 pandemic, BBLP arranged for magazines to be donated to local charities, care homes and members of the public who had been acutely impacted by COVID-19. To date, BBLP have donated 1600no. magazines (£8000.00).

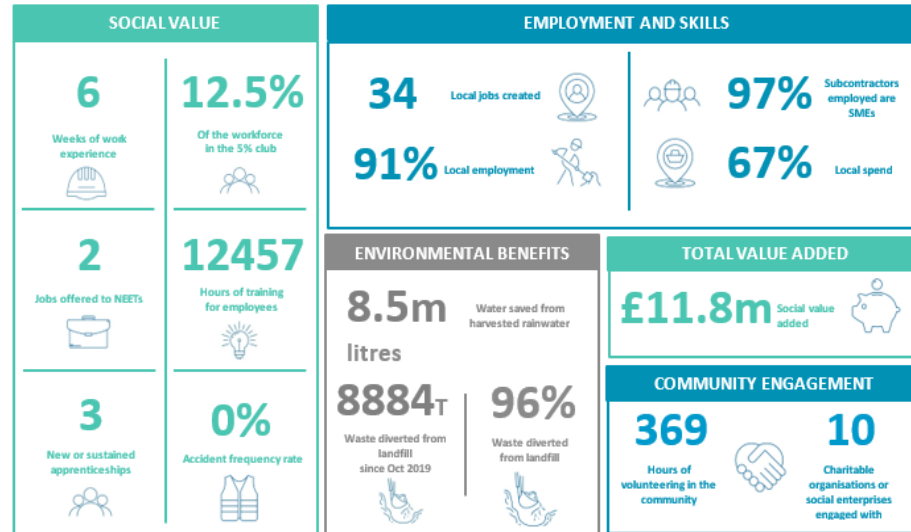
BBLP are currently in discussion with a local school in the borough to help support their careers program, building on previous collaboration and helping to develop our relationship with more schools in the borough.

BBLP are endeavoring to increase the engagement and assistance given to date at a local hospice in the borough.



Balfour Beatty

## ROCHDALE BOROUGH COUNCIL AND BALFOUR BEATTY SOCIAL VALUE REPORT- April 2021



Next issue due: 15/03/2021

**Balfour Beatty**